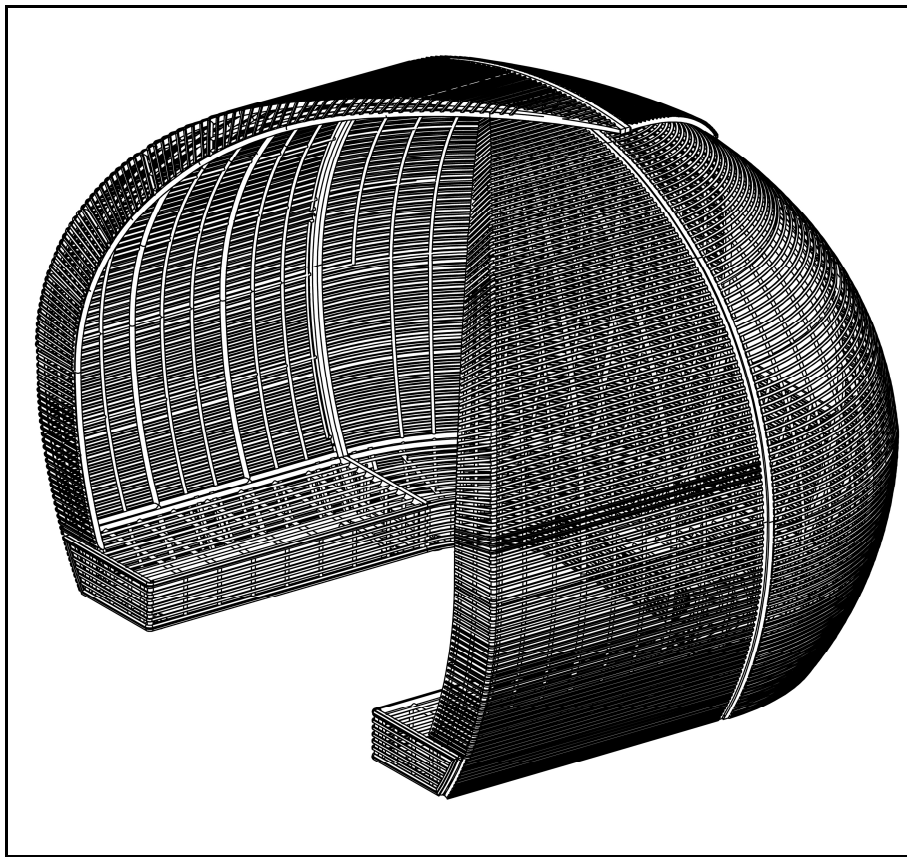




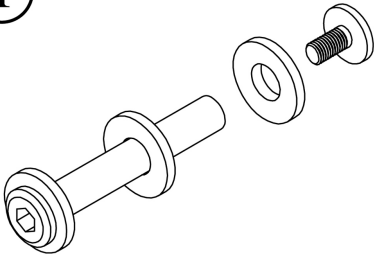
wherever you are



ASSEMBLING INSTRUCTION SPARTAN DAYBED

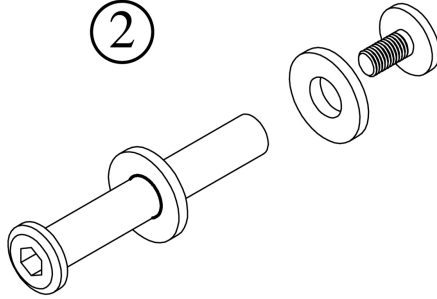
Hardware List

①



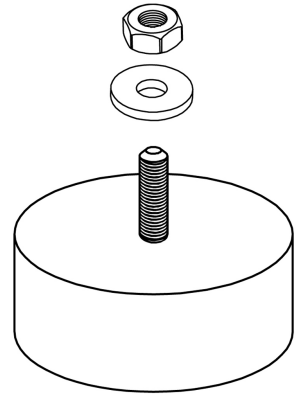
Bolt Ø10 x 40 mm (34 Pcs)

②



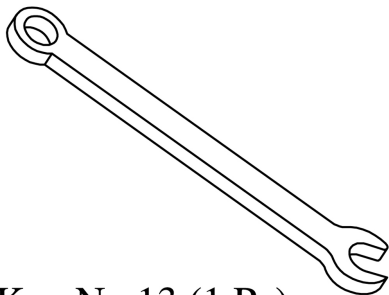
Bolt Ø10 x 55 mm (12 Pcs)

③



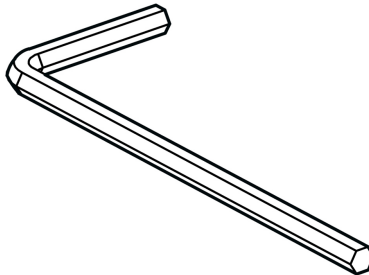
Feet (18 Pcs)

④



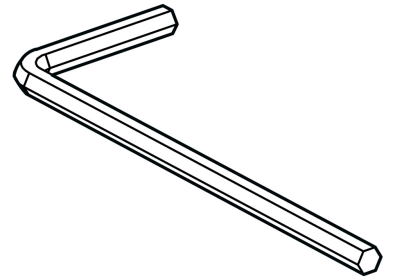
Key No.13 (1 Pc)

⑤



Allen Key M-4 (1 Pc)

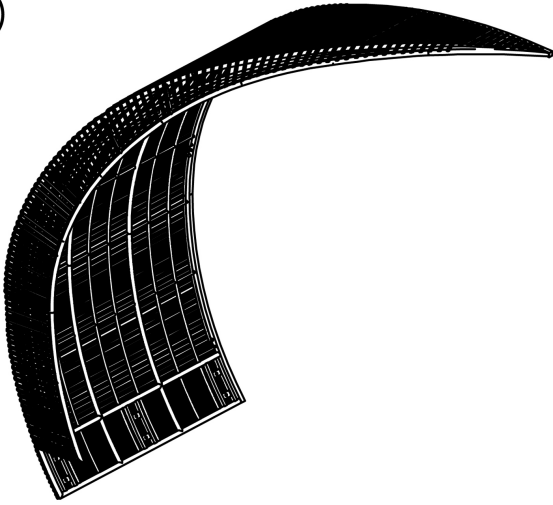
⑥



Allen Key M-5 (2 Pcs)

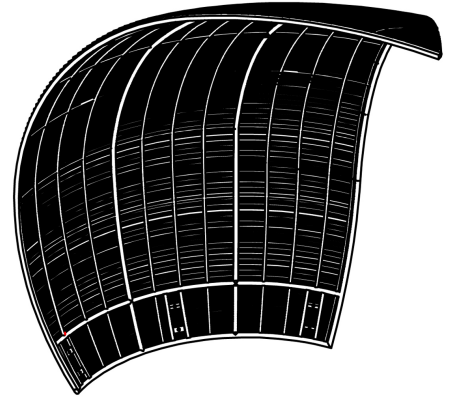
Part List

Ⓐ



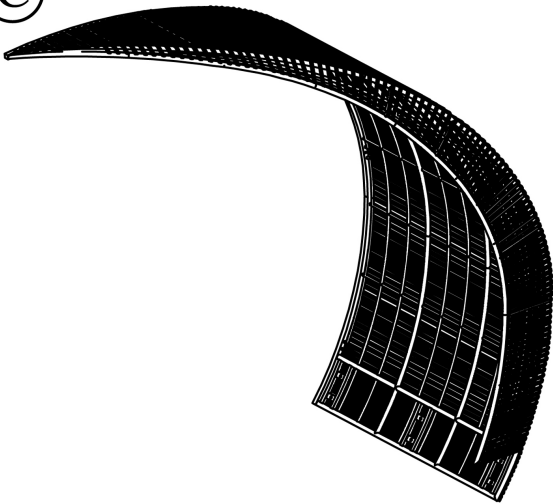
Left End part 1 piece

Ⓑ



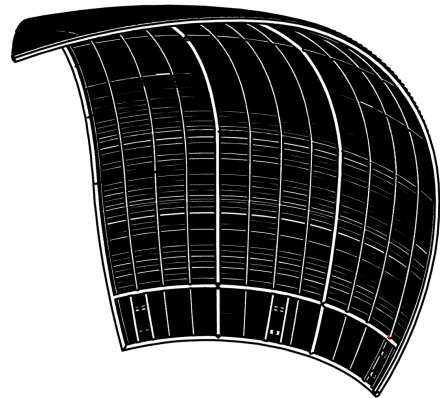
Left Curved corner part
1 piece

Ⓒ



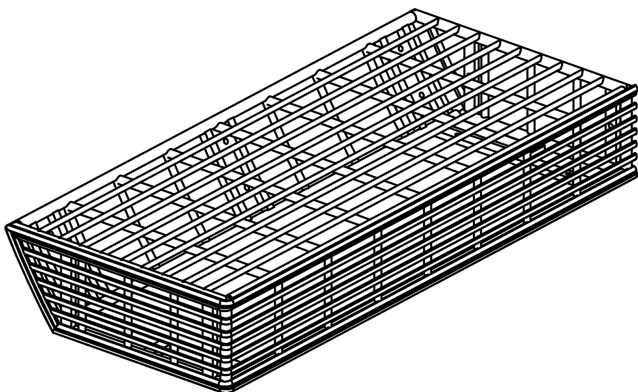
Right End part = 1 piece

Ⓓ



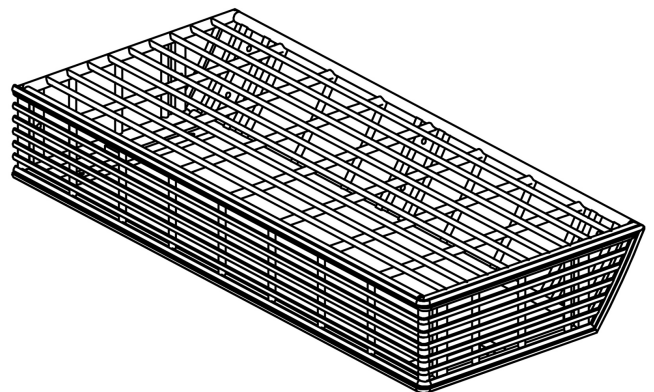
Right Curved corner part
1 piece

Ⓔ



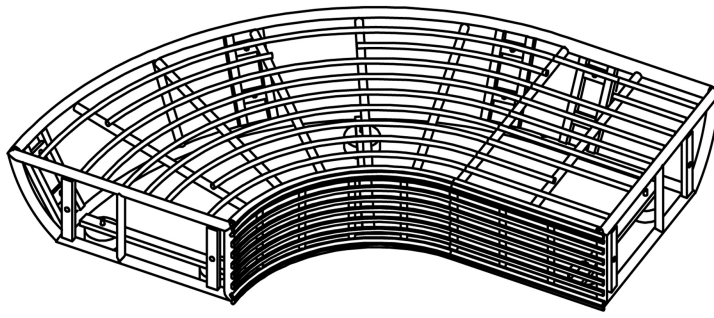
Left End part base
1 piece

Ⓕ



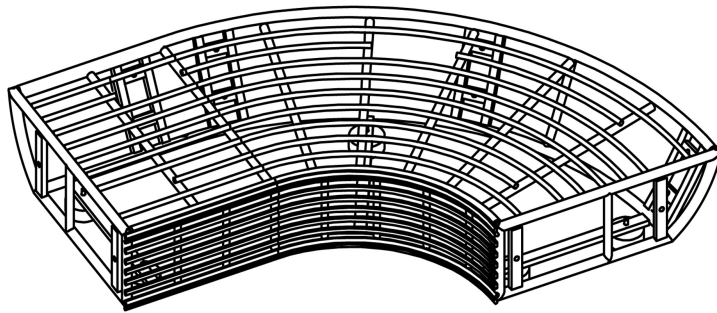
Right End part base
1 piece

Ⓔ



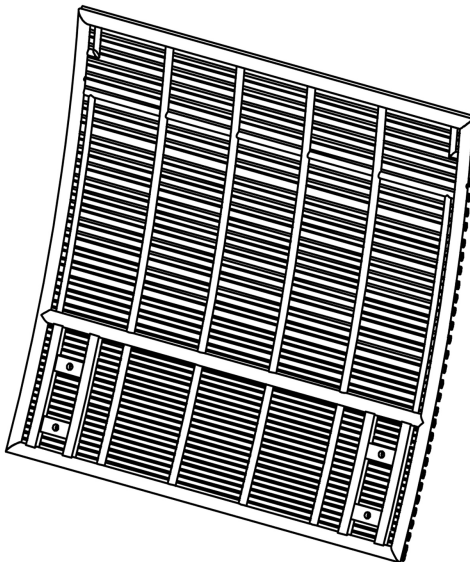
Left Curved corner part base
1 piece

Ⓕ



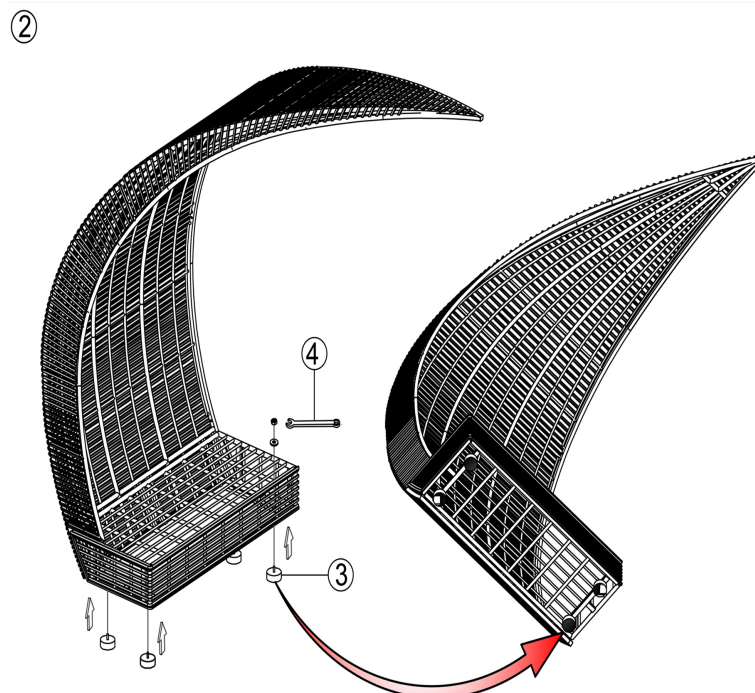
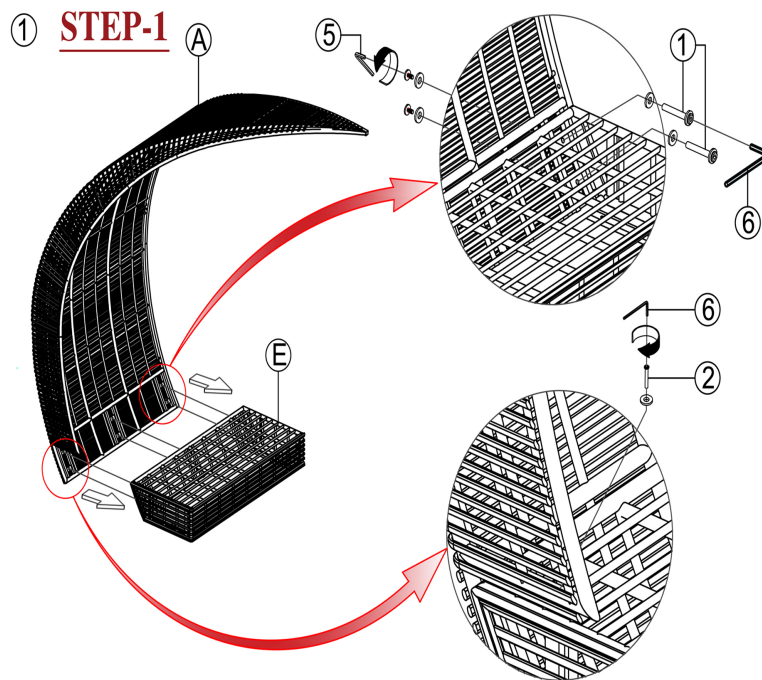
Right Curved corner part base
1 piece

Ⓖ



Center Part = 1 piece

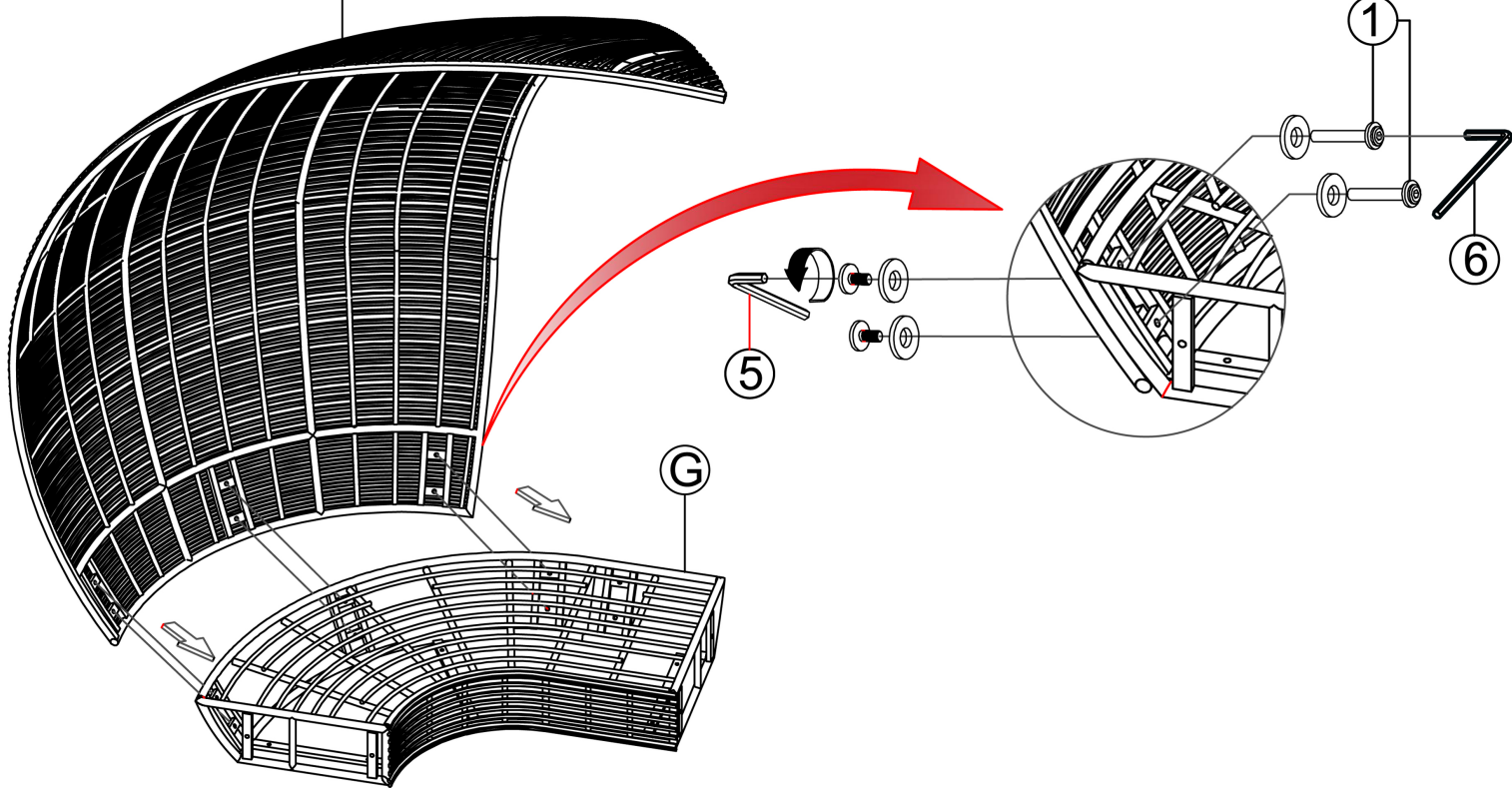
ASSEMBLING INSTRUCTION



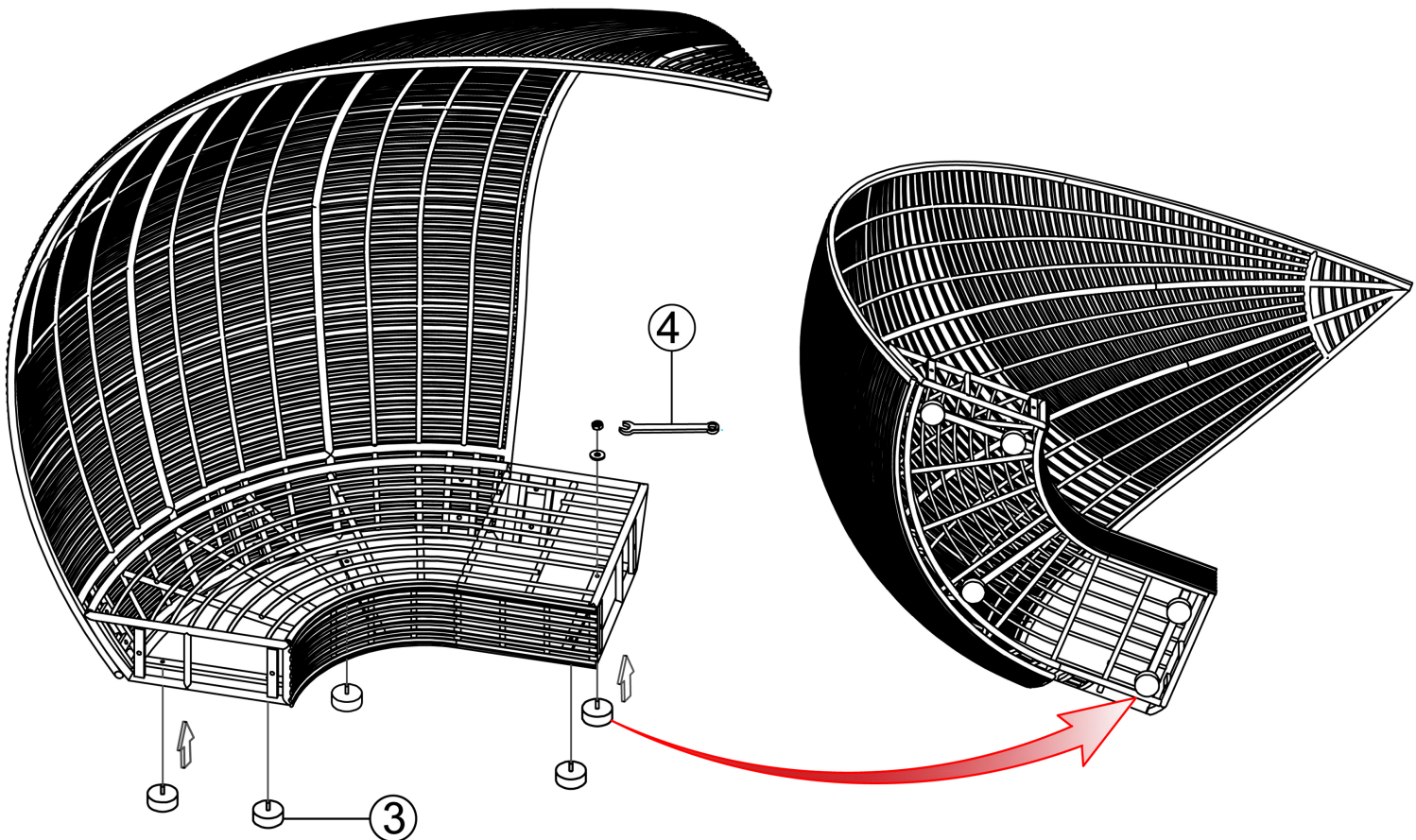
③

Ⓑ

STEP-2

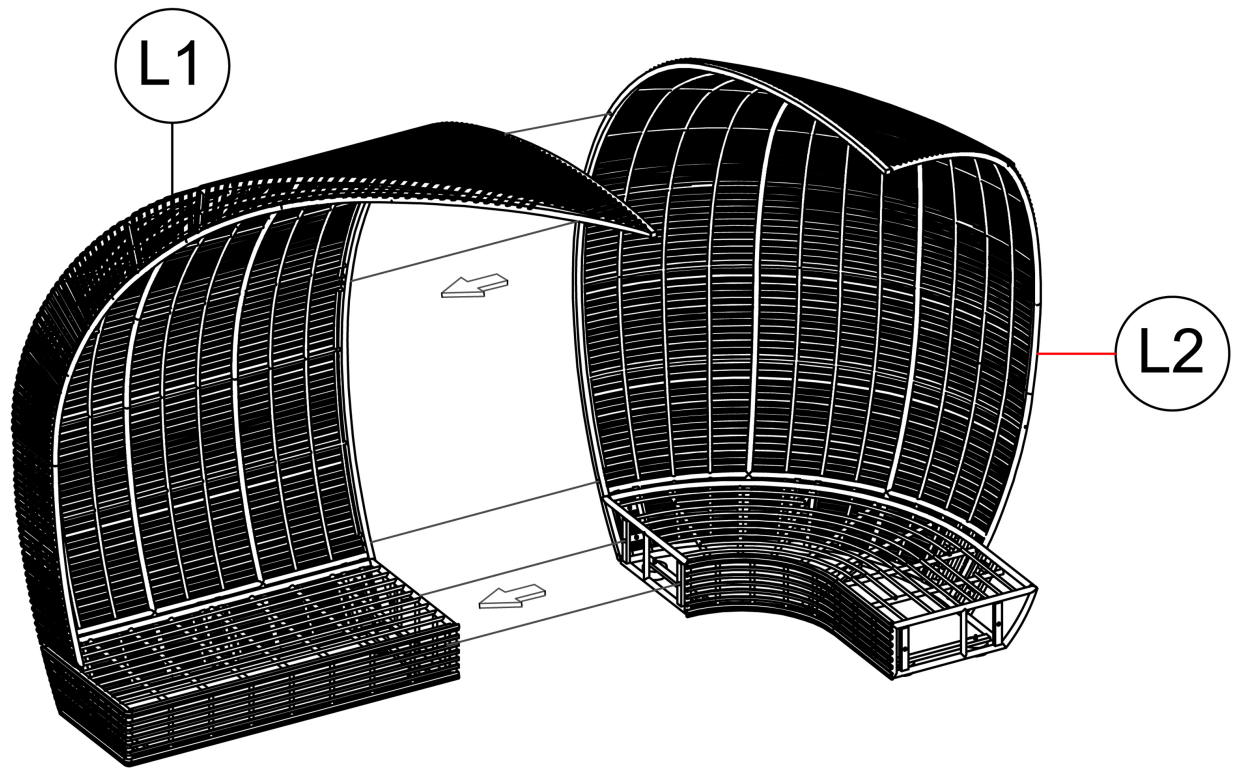


④

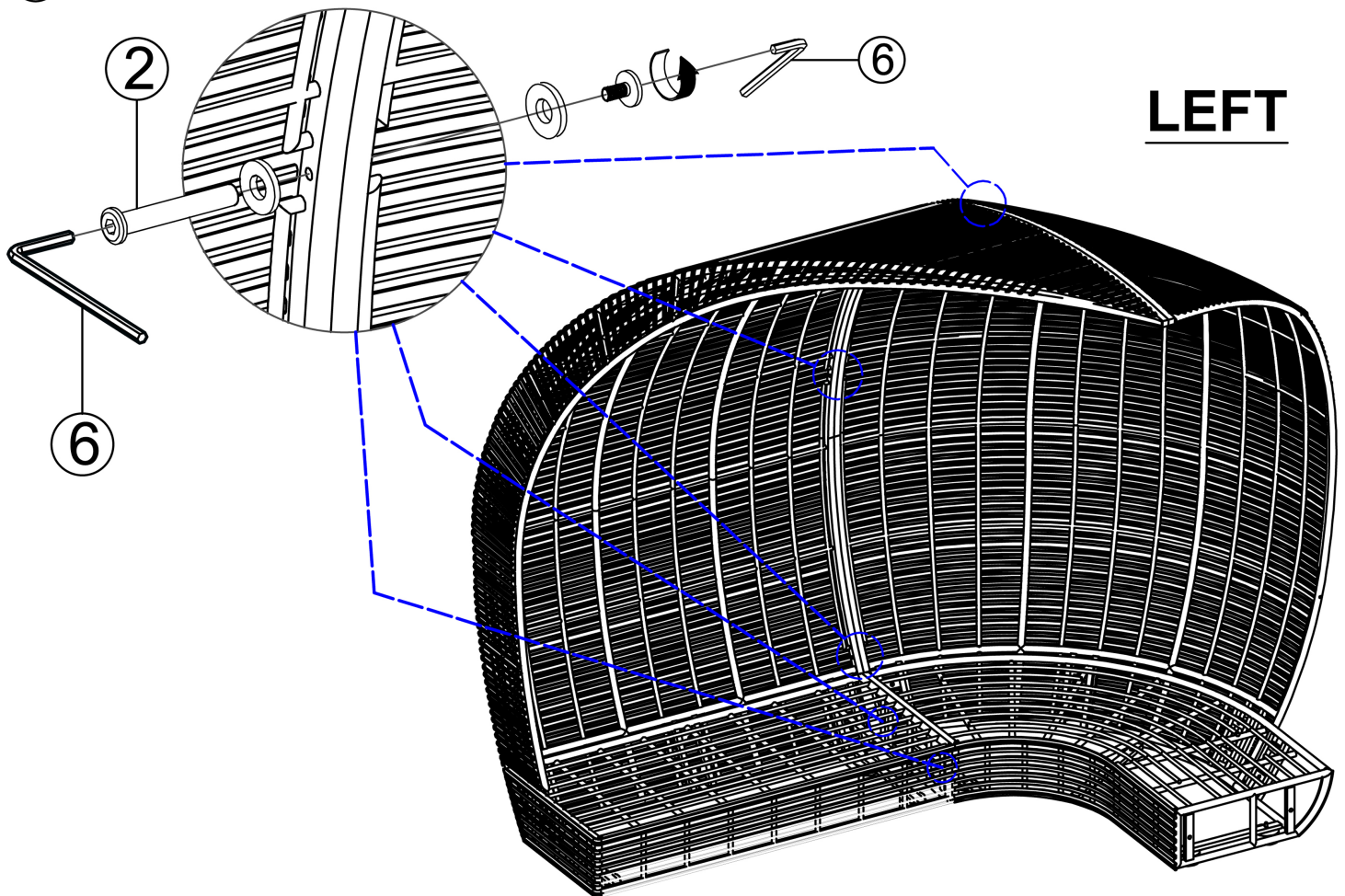


③

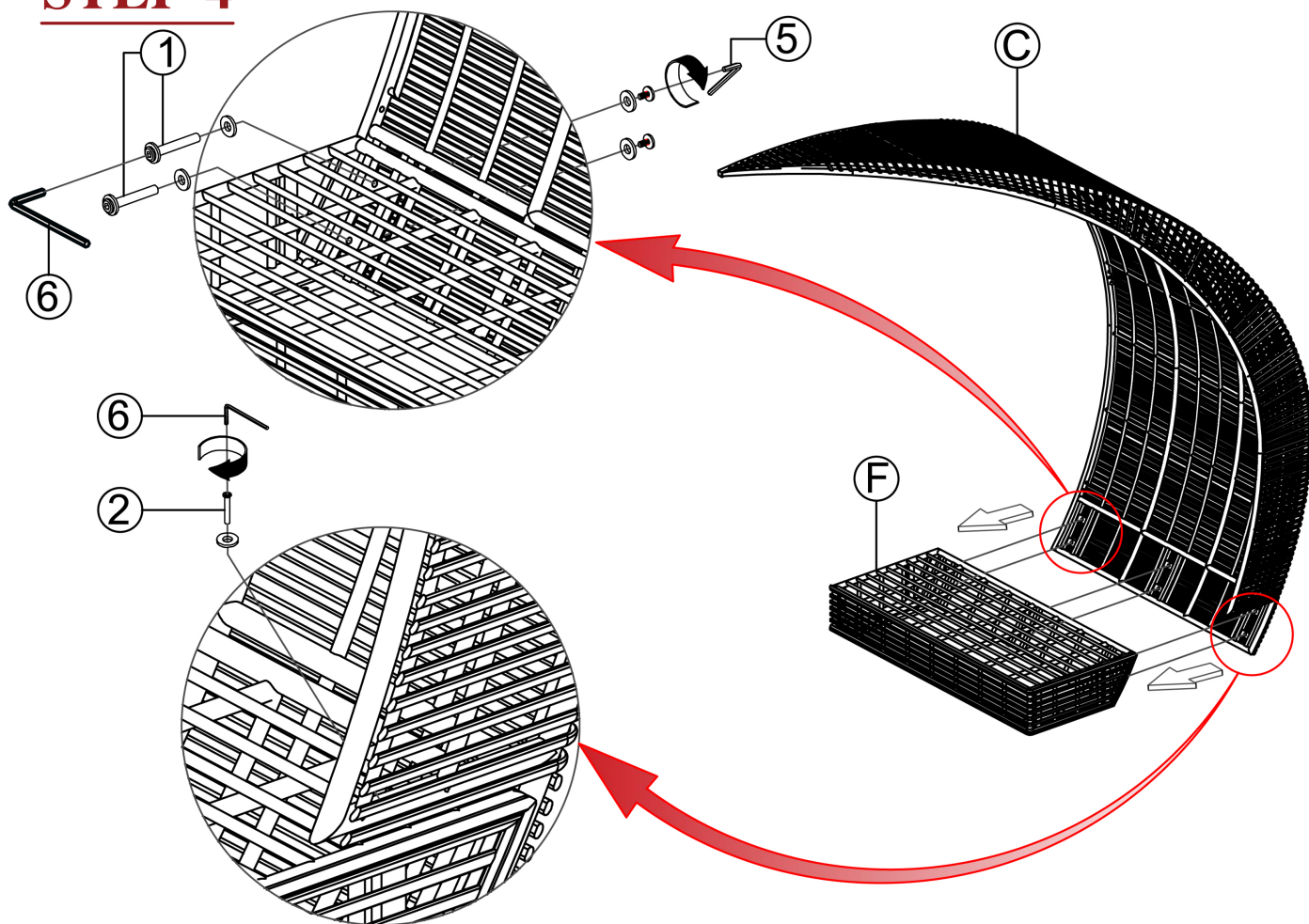
STEP-3



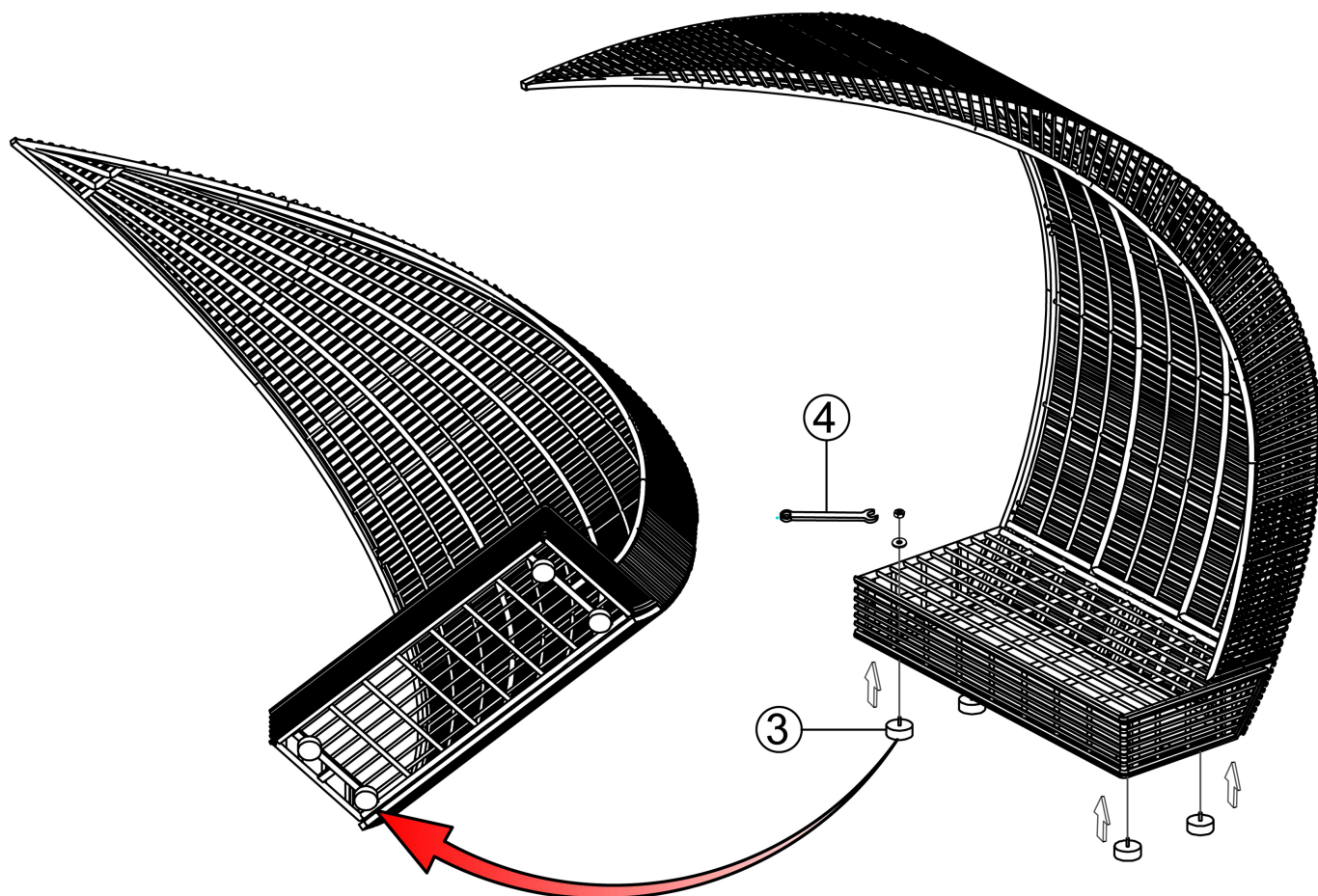
④



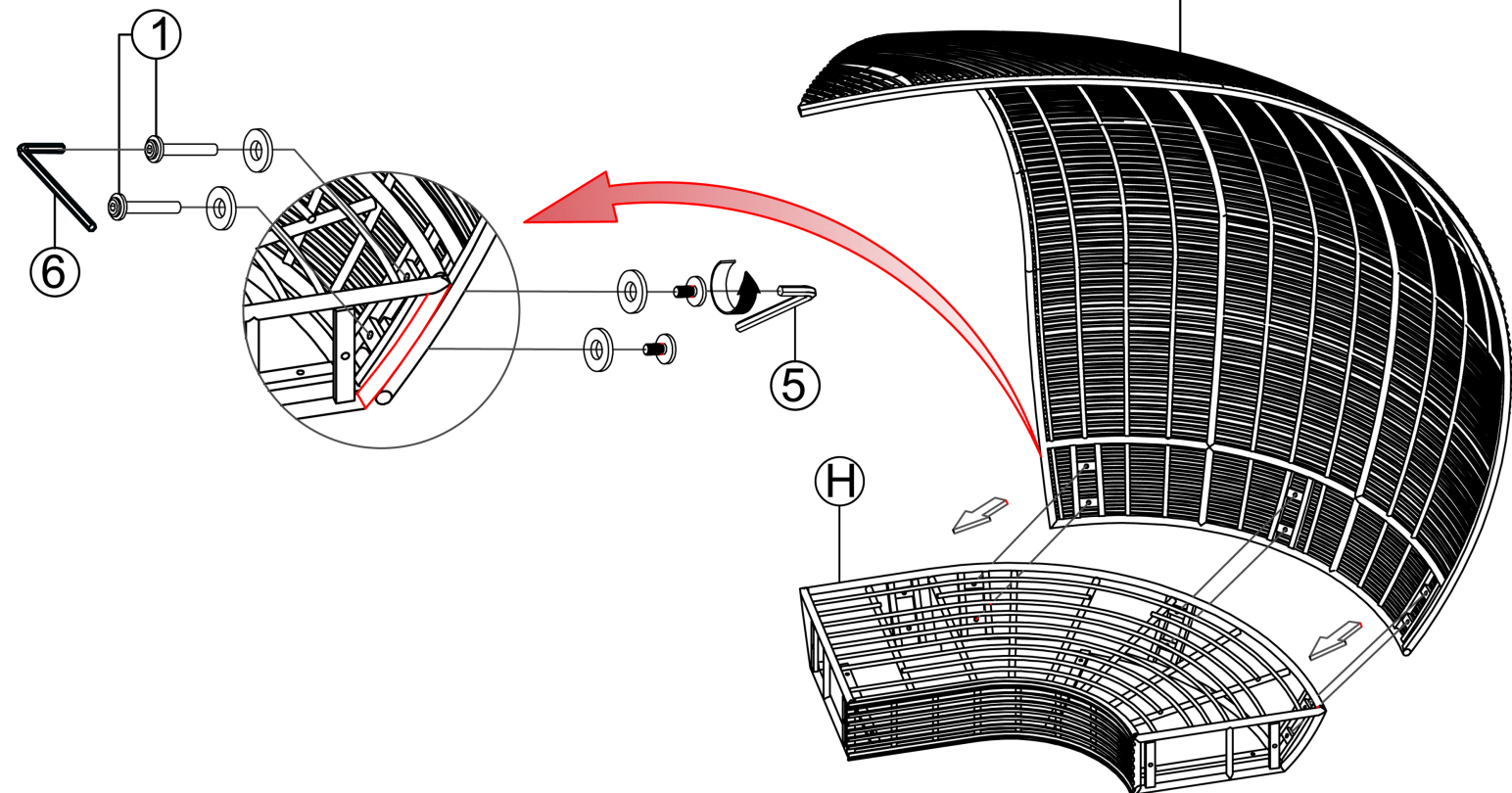
⑤ **STEP-4**



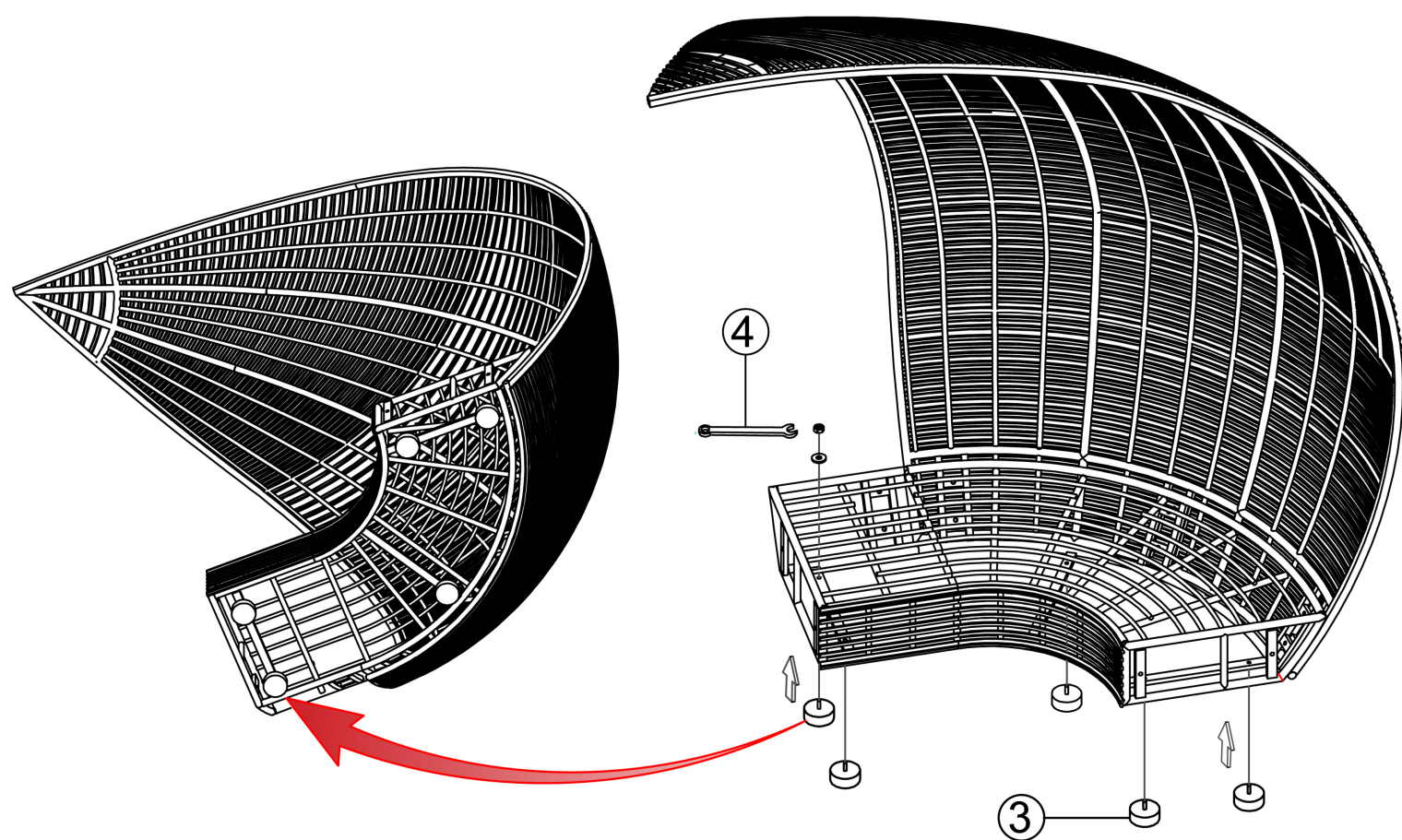
⑥



⑦ **STEP-5**

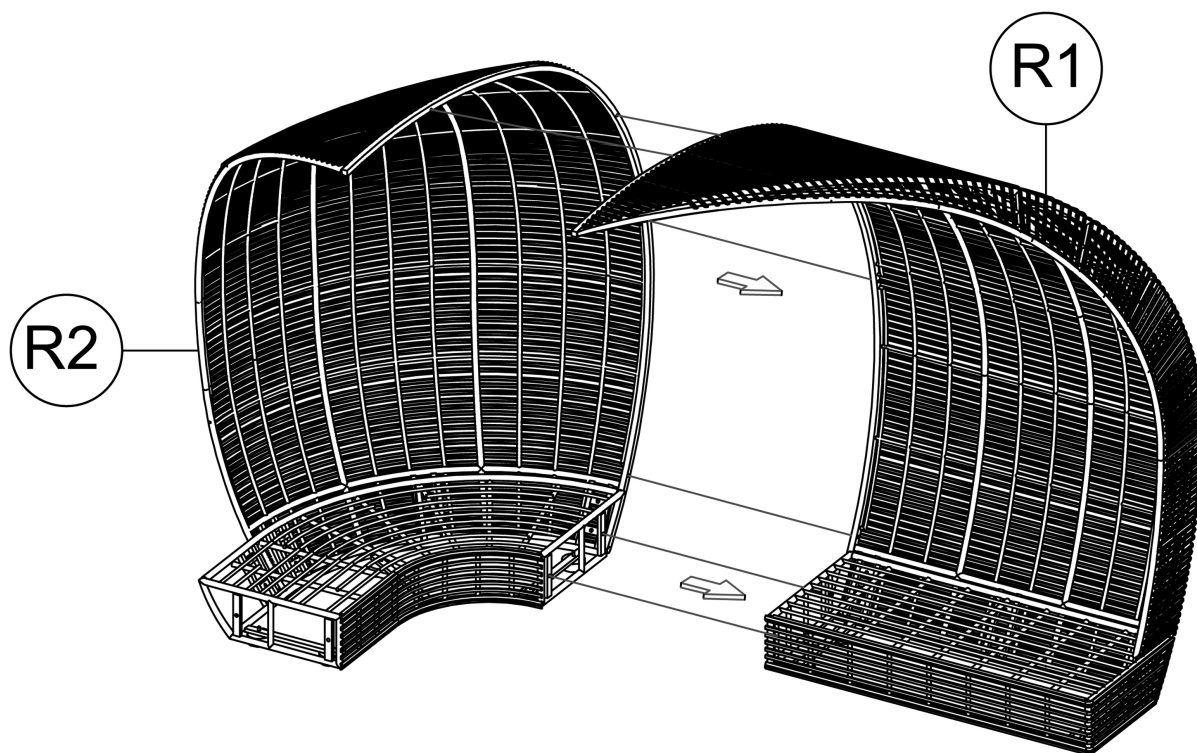


⑧



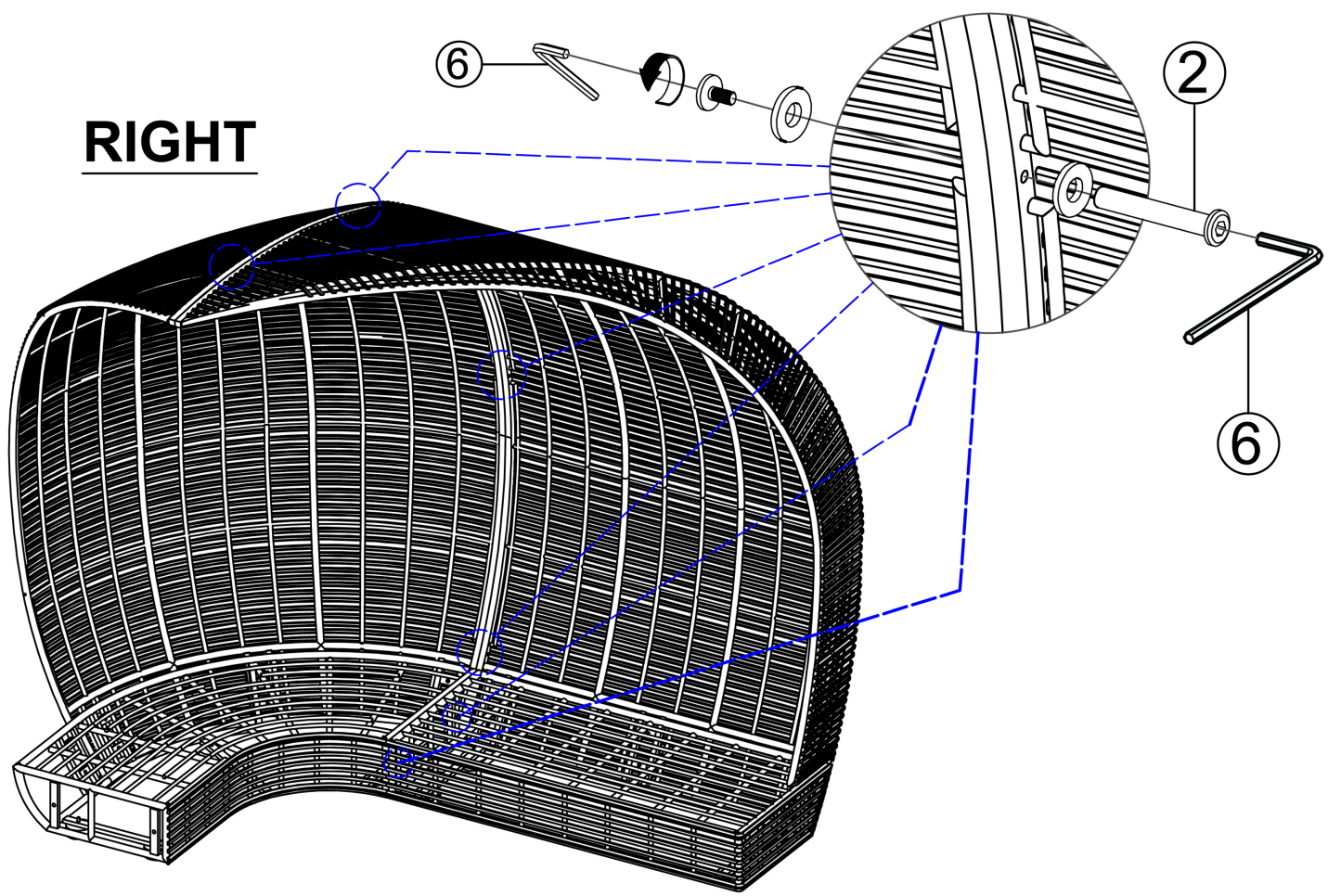
9

STEP-6



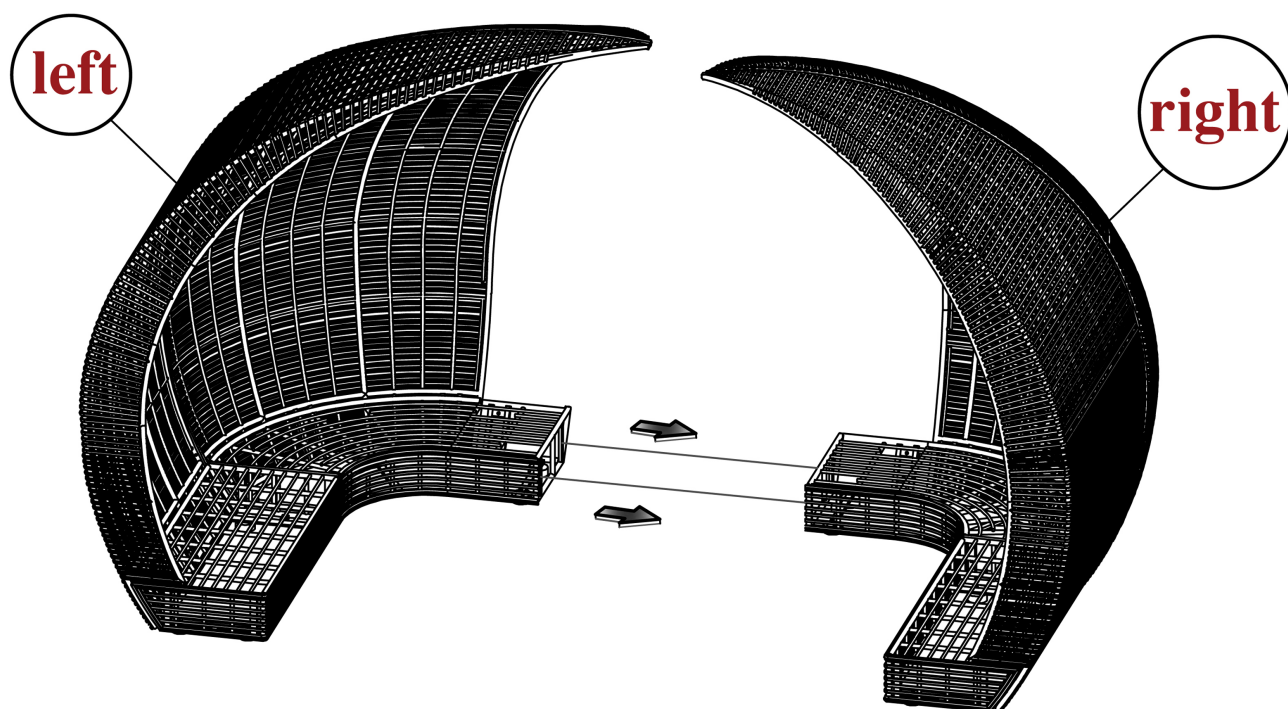
10

RIGHT

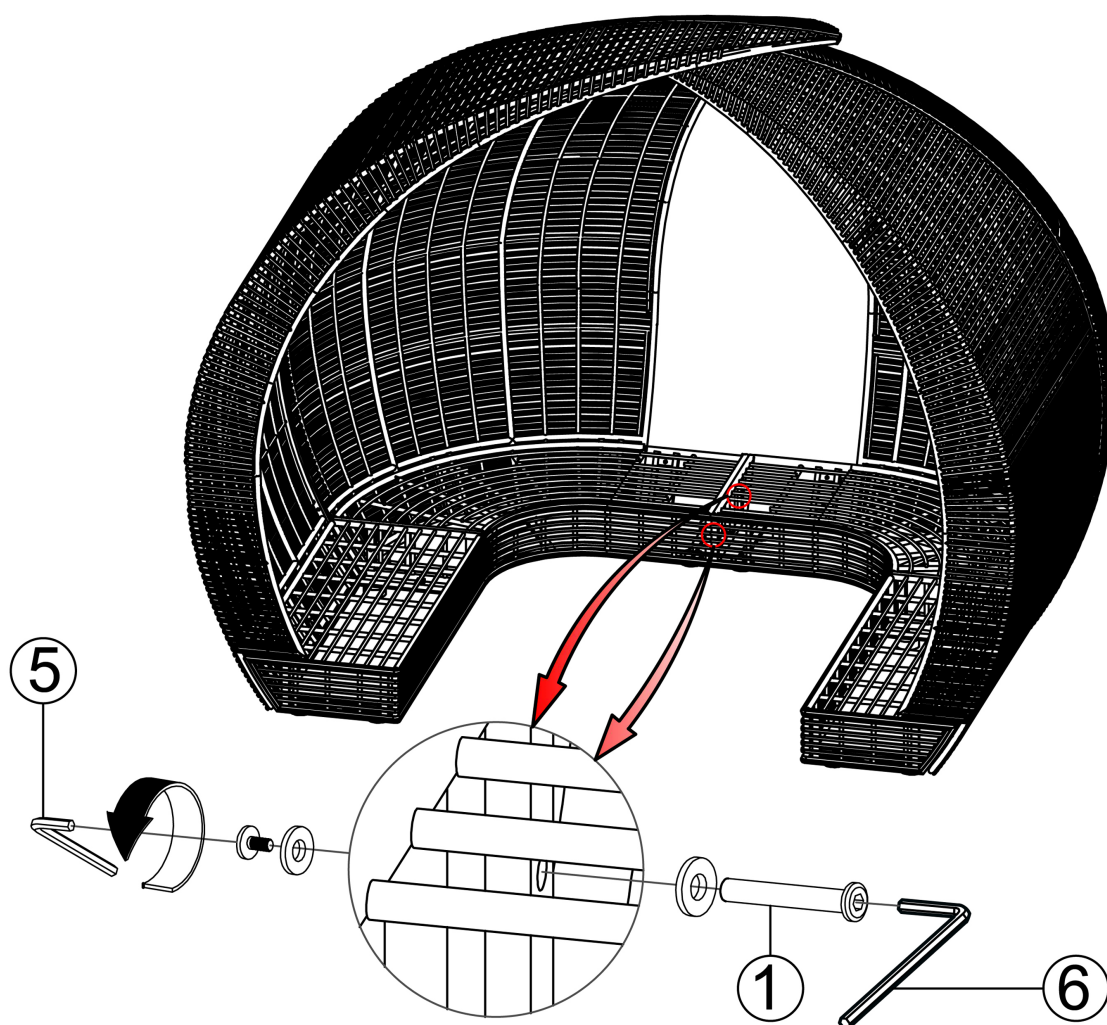


11

STEP-7

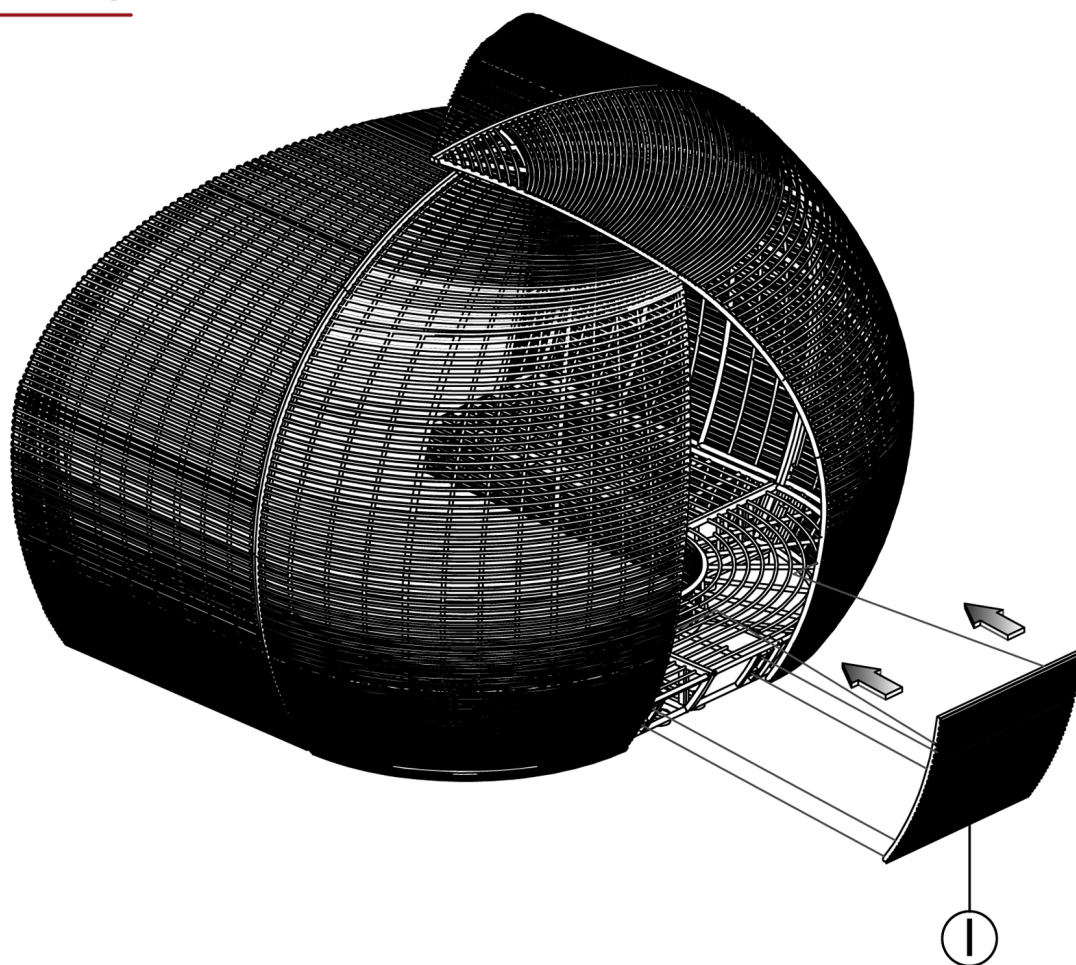


12



13

STEP-8



14

